

# avantgarde



Leading edge tableware, buffetware  
and contract furniture



- Chinaware
- Cutlery
- Glassware
- Buffetware
- Holloware
- Furniture

# avantgarde

## Leading edge tableware & buffetware

A fusion of vision, inspiration, passion and expertise....

avantgarde is the result of years of worldwide research and development. Utilising the combined resources and expertise of industry leaders, the avantgarde range has emerged as a collection of unique, innovative designs, certified quality with individuality, flexibility and top performance.

Manufactured to strict quality standards by the best equipped factories, every item in the avantgarde range has been carefully graded and is securely packed for export.



Chinaware

Cutlery

Glassware

Buffetware

Holloware

Furniture

## GUARANTEED

- ✓ Quality
- ✓ Performance
- ✓ Delivery
- ✓ Cost Savings
- ✓ Leading Edge Design
- ✓ Superior Service
- ✓ Low Prices
- ✓ Continuity



# avantgarde chinaware



**avantgarde** Chinaware reflects the latest international dining and buffet trends, with over 200 items in the selection.

The creation of shapes, sizes and designs has been influenced by internationally recognised food and beverage executives, chefs and homewares professionals.

**avantgarde** chinaware is produced in a famous region of China which has over 1800 years of history in ceramics.

Chinaware and Crockery comes in all forms. The porcelain formula specified for **avantgarde** Chinaware conforms with recognised international quality standards including AS-NZS 4371:1996, BS 4034:1990 and BSEN 1183:1997.

Tests have been carried out at CERAM an independent authorised laboratory in the United Kingdom and certification includes: Non porosity, Thermal shock, Chipping, Impact, Lead and cadmium release, Glaze hardness, dishwasher and microwave safe.



## ROUND FLAT RIM PLATE

15cm	AG 80015
17cm	AG 80017
19cm	AG 80019
22cm	AG 80022
25cm	AG 80025
27cm	AG 80027
28cm	AG 80028
30cm	AG 80030
33cm	AG 80033



## TRIANGLE FLAT RIM PLATE

14cm	AG 81114
17cm	AG 81117
23cm	AG 81123
31cm	AG 81131



## SQUARE FLAT RIM PLATE

13cm	AG 82213
17cm	AG 82217
23cm	AG 82223
30cm	AG 82230



## RECTANGULAR FLAT RIM PLATE

27cm x 22.5cm	AG 82727
34.5cm x 29.5cm	AG 82734



## ROUND FLAT PLATE - BROAD RIM

16cm	AG 84416
25cm	AG 84425
29.5cm	AG 84429
33cm	AG 84433



## SQUARE COUPE PLATE

9cm	AG 81409
15cm	AG 81415
20cm	AG 81420
28cm	AG 81428



## RECTANGULAR COUPE PLATE

25cm x 19cm	AG 84525
28.5cm x 21cm	AG 84528



## ROUND DEEP RIM PLATE

13cm	AG 81313
18cm	AG 81318
23cm	AG 81323
26cm	AG 81326
30cm	AG 81330
34cm	AG 81334



## QUAD DEEP PLATE

20cm	AG 87320
27cm	AG 87327
32cm	AG 87332



### MOON DEEP PLATE

20cm AG 85320  
27cm AG 85327  
32cm AG 85332



### OVAL DEEP RIM PLATE

36cm x 28cm AG 81836



### ROUND FLAT PLATE

15cm AG 81015  
17cm AG 81017  
23.5cm AG 81023  
27cm AG 81027  
30cm AG 81030  
32cm AG 81032



### ROUND DEEP PLATE

14cm AG 80114  
20cm AG 80120  
24.5cm AG 80124  
29cm AG 80129  
32cm AG 80132



### STELLAR BOWL

17cm x 9.5cm x 5cm AG 81617  
23cm x 13cm x 5cm AG 81623



### STELLAR SERVING DISH

20cm x 11.5cm AG 81720  
37cm x 21cm AG 81737



### ECLIPSE PLATE

23cm x 12cm AG 80723



### ECLIPSE DEEP PLATE

13.5cm x 7cm AG 83713  
29.5cm x 15.5cm AG 83729  
40cm x 20cm AG 83740



### ECLIPSE SERVING PLATE

39cm x 19.5cm AG 82039  
46cm x 22cm AG 82046



### OVAL SERVING PLATE

36.5cm x 17cm AG 82136  
41cm x 19.5cm AG 82141



### OVAL DEEP BOWL

17cm x 12.5cm AG 80417  
20cm x 14cm AG 80420  
23cm x 16cm AG 80423  
25cm x 17.5cm AG 80425  
31cm x 21.5cm AG 80431



### LUNA DISH

15cm x 13cm AG 85815  
20cm x 14cm AG 85820  
24cm x 16cm AG 85824  
29cm x 21cm AG 85829



### UNIVERSAL BOWL

8cm AG 86608  
10cm AG 85024  
12cm AG 86612  
14cm AG 86614  
18cm AG 86618  
22cm AG 86622  
26cm AG 86626



### UNIVERSAL LID WITH KNOB

For 12cm Bowl AG 86613  
For 14cm Bowl AG 86615



### COMBI SAUCER

19cm - Suits 12cm & 14cm Bowl AG 86619



### ECHO BOWL

9cm AG 82509  
11cm AG 82511  
15cm AG 82515  
19cm AG 82519



### SQUARE TULIP BOWL

6cm AG 86206  
8cm AG 86208  
10cm AG 86210  
14cm AG 86214  
18cm AG 86218  
20cm AG 86220



### COMET CUP

5cm AG 84605  
7cm AG 84607  
9cm AG 84609  
10cm AG 84610

**ROUND DEEP BOWL**

- 7cm AG 81207
- 8cm AG 81208
- 9.5cm AG 81209
- 10cm AG 81210
- 12.5cm AG 81212
- 15cm AG 81215
- 18cm AG 81218
- 21cm AG 81221
- 23cm AG 81223
- 25.5cm AG 81225
- 30cm AG 81230

**ROUND RICE BOWL**

- 10cm AG 81510
- 11.5cm AG 81511

**CHINESE SPOON**

- 12.5cm AG 86912

**SPOON/CHOPSTICK REST**

- 9cm AG 87609

**SOY/VINEGAR POT WITH LID**

- 0.10Ltr AG 87510

**SQUARE DIVIDED DISH**

- 8cm AG 87108

**YING/YANG DIPPING BOWL**

- 9.5cm AG 87909

**SQUARE CURVED DISH**

- 9cm AG 82409

**SATURN DISH**

- 10.5cm x 6cm AG 84110





## BIANCA SQUARE DISH

8.5cm AG 86708



## CLIO DEEP DISH

8.5cm AG 86808



## MIKADO FLAT RIM DISH

7.5cm AG 86507



## TWIN DISH

11cm x 5.5cm AG 87211



## ROUND STACKING BOWL

12cm AG 83312

13.5cm AG 83313

15cm AG 83315



## ROUND STACKING ASHTRAY

9.5cm AG 86495



## TOOTH PICK HOLDER

4.5cm AG 88445



## BUD VASE

15cm AG 87415



## BUD VASE

10cm AG 87410



## NAPKIN HOLDER

(Oval Thick Ring)

4cm AG 87804





**NAPKIN HOLDER  
(Round Ring)**  
4.5cm AG 87845



**RAMEKIN**  
6.5cm (D) x 3.3cm (H) AG 80506  
8cm (D) x 7cm (H) AG 80508  
9cm (D) x 4cm (H) AG 80509  
11.5cm (D) x 4.5cm (H) AG 80511  
17cm (D) x 7.5cm (H) AG 80517



**EGG CUP / TEA LIGHT**  
8.5cm AG 85585



**EGG CUP WITH SAUCER**  
13.5cm AG 85613



**OVAL SALT SHAKER**  
6cm (h) x 5.5cm (d) AG 86010



**OVAL PEPPER SHAKER**  
6cm (h) x 5.5cm (d) AG 86020

**ROUND SALT SHAKER**  
6cm (h) x 4cm (d) AG 86030

**ROUND PEPPER SHAKER**  
6cm (h) x 4cm (d) AG 86040

**ROUND DEEP BOWL  
WITH RIM**  
28cm AG 83428  
32cm AG 83432  
38cm AG 83438  
41cm AG 83441

**ROUND FLAT COUPE PLATE**  
9cm AG 80309  
10.5cm AG 80310  
15.5cm AG 80315  
17.5cm AG 80317  
20.5cm AG 80320  
23cm AG 80323  
25.5cm AG 80325  
30.5cm AG 80330  
32cm AG 80332  
35cm AG 80335  
39.5cm AG 80339  
45cm AG 80345  
50cm AG 80350



**ROUND DEEP COUPE PLATE**  
16cm AG 89016  
18cm AG 89018  
21cm AG 89021  
25.5cm AG 89025  
30.5cm AG 89030  
32cm AG 89032  
35cm AG 89035  
40.5cm AG 89040  
46cm AG 89046



**OVAL DEEP COUPE PLATTER**  
24cm x 16cm AG 83924  
28cm x 18.5cm AG 83928  
33cm x 23.5cm AG 83933  
50cm x 35cm AG 83950  
56cm x 42cm AG 83956



**OVAL DEEP DISH**  
22.5cm x 15.5cm AG 87022  
27.5cm x 19cm AG 87027  
33cm x 23cm AG 87033  
37.5cm x 26cm AG 87037



**ROUND DEEP  
BUFFET BOWL**  
29cm / 4 Ltr AG 88303





## SQUARE COUPE PLATTER

21cm AG 88921  
25cm AG 88925  
28cm AG 88928  
36cm AG 88936  
40cm AG 88940



## SQUARE BASE PLATE

24cm AG 83824



## PETITE SQUARE PLATE

10.5cm AG 83210



## RECTANGULAR FLAT RIM PLATTER

12cm x 8cm AG 83612  
24cm x 9cm AG 83624  
30cm x 12cm AG 83630  
36.5cm x 18cm AG 83636  
41cm x 23cm AG 83641  
46.5cm x 28cm AG 83646



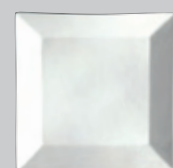
## SQUARE DEEP PLATE

20.5cm AG 81920  
26cm AG 81926  
31cm AG 81931



## FOUR SEASONS PLATE

23cm AG 82323



## SQUARE FLAT PLATTER

17.5cm AG 83117  
21cm AG 83121  
26cm AG 83126  
30cm AG 83130  
36cm AG 83136  
40cm AG 83140



## SQUARE FOOTED BOWL

7.5cm AG 86107  
12cm AG 86112  
19cm AG 86119  
22cm AG 86122  
28cm AG 86128



## SQUARE DEEP BOWL

12cm AG 86312  
14cm AG 86314  
16cm AG 86316  
18cm AG 86318  
20cm AG 86320  
23cm AG 86323



## SQUARE BASE PLATE MATT BLACK

24cm AG 83824-MB



## RECTANGULAR FLAT RIM PLATTER - MATT BLACK

24cm x 9cm AG 83624-MB  
30cm x 12cm AG 83630-MB  
36.5cm x 18cm AG 83636-MB



## SQUARE FLAT PLATTER MATT BLACK

17.5cm AG 83117-MB  
21cm AG 83121-MB  
26cm AG 83126-MB  
30cm AG 83130-MB



## SQUARE COUPE PLATTER MATT BLACK

21cm AG 88921-MB  
25cm AG 88925-MB  
28cm AG 88928-MB







**OVAL COFFEE POT - BASE**  
0.30 Ltr AG 84230  
**LID FOR OVAL COFFEE POT**  
AG 84231



**OVAL COFFEE POT - BASE**  
0.60 Ltr AG 84260  
**LID FOR OVAL COFFEE POT**  
AG 84261



**OVAL TEA POT - BASE**  
0.35 Ltr AG 84335  
**LID FOR OVAL TEA POT**  
AG 84336



**OVAL TEA POT - BASE**  
0.70 Ltr AG 84370  
**LID FOR OVAL TEA POT**  
AG 84371



**OVAL SUGAR BOWL - BASE**  
0.25 Ltr AG 84916  
**LID FOR OVAL SUGAR BOWL**  
AG 84917



**ROUND UNIVERSAL SUGAR BOWL - BASE**  
10cm / 0.24 Ltr AG 85024  
**LID FOR ROUND UNIVERSAL SUGAR BOWL**  
10.5cm AG 85025

**OVAL CREAMER**  
0.06 Ltr AG 80906  
0.15 Ltr AG 80915  
0.30 Ltr AG 80930  
0.50 Ltr AG 80950



**ROUND TEA POT - BASE**  
0.60 Ltr AG 85260  
**LID FOR ROUND TEA POT**  
AG 85261



**ROUND TEA POT - BASE**  
0.85 Ltr AG 85285  
**LID FOR ROUND TEA POT**  
AG 85286



**ROUND COFFEE POT - BASE**  
0.35 Ltr AG 85435  
**LID FOR ROUND COFFEE POT**  
AG 85436



**ROUND COFFEE POT - BASE**  
0.60 Ltr AG 85460  
**LID FOR ROUND COFFEE POT**  
AG 85461



**ROUND SUGAR BOWL - BASE**  
9cm AG 85709  
**LID FOR ROUND SUGAR BOWL**  
AG 85710



**ROUND CREAMER**  
0.20 Ltr AG 85120



**SACHET HOLDER**  
10.5cm x 7.5cm x 4cm AG 84810



**SAKE CUP**  
0.07 Ltr AG 89501



### STACKING CUP ESPRESSO

0.09 Ltr AG 88801

### SAUCER

12cm AG 88802



### STACKING CUP

0.18 Ltr AG 88803

### SAUCER

16cm AG 88807



### STACKING CUP

0.22 Ltr AG 88804

### SAUCER

16cm AG 88807



### STACKING COFFEE MUG

0.22 Ltr AG 88809

0.25 Ltr AG 88805

0.30 Ltr AG 88808

### SAUCER

16cm AG 88807



### STACKING SOUP CUP WITH HANDLES

0.26 Ltr AG 88806

### SAUCER

16cm AG 88807



### STACKING MUG

0.26 Ltr AG 88810



### ESPRESSO CUP

0.08 Ltr AG 87701

### SAUCER

12cm AG 89902



### CAPPUCCINO CUP

0.22 Ltr AG 87703

### SAUCER

15cm AG 89905



### TEA / CAPPUCCINO CUP

0.27 Ltr AG 87704

### SAUCER

15cm AG 89905





**ESPRESSO CUP**  
0.08 Ltr AG 89901  
**SAUCER**  
12cm AG 89902



**ESPRESSO CUP**  
0.08 Ltr AG 83001  
**SAUCER**  
12cm AG 89902



**CAFFE CUP**  
0.20 Ltr AG 89903  
**SAUCER**  
15cm AG 89905



**COFFEE CUP**  
0.18 Ltr AG 83003  
**SAUCER**  
15cm AG 89905



**CAPPUCCINO CUP**  
0.22 Ltr AG 83004  
**SAUCER**  
15cm AG 89905



**CAFFE CUP**  
0.25 Ltr AG 89906  
**SAUCER**  
15cm AG 89905

## SPECIAL ITEMS - EXCLUSIVE DESIGNS BY avantgarde

Our Custom-design and manufacturing service enables you to bring your ideas to life quickly, efficiently and within budget by dealing directly with the source.

Our service includes design and manufacture of special decorations and shapes, production of special packaging, bar coding the products using your own bar codes and delivery to your nominated destinations.

We are able to reproduce your own designs, colours, logos, packaging, or exclusive product backstamps to further enhance customer awareness of your brand.



**LATTE CUP TALL**  
0.30 Ltr AG 89904  
**SAUCER**  
15cm AG 89905



**COFFEE MUG**  
0.25 Ltr AG 89301  
0.30 Ltr AG 89302

# avantgarde cutlery

Designed and produced by professionals to the highest standards using the best available materials and manufacturing techniques.

**avantgarde** cutlery carries the trademark of quality, continuity and performance with a prestige image and produced to British standards BS EN ISO 8442:1997.

Compare the weight, size and finish of the mirror polished **avantgarde** range.

## **BAGUETTE »50001« 3.0mm Mirror Polished Stainless Steel**

Table Spoon	206mm	AG 50101
Table Fork	206mm	AG 50201
Table Knife Hollow Handle	245mm	AG 50371
Table Knife Solid Handle	245mm	AG 50391
Dessert Spoon	185mm	AG 50401
Dessert Fork	185mm	AG 50501
Dessert Knife Hollow Handle	215mm	AG 50671
Dessert Knife Solid Handle	215mm	AG 50691
Tea Spoon	140mm	AG 50701
Demitasse Spoon	110mm	AG 50901
Lobster Pick (Neutral)	170mm	AG 53601
Pastry Server	250mm	AG 55901
Oyster / Cake Fork	130mm	AG 56401
Bread & Butter Knife Hollow Handle	180mm	AG 56671
Bread & Butter Knife Solid Handle	180mm	AG 56691
Iced Tea Spoon	200mm	AG 57201
Steak Knife Hollow Handle	240mm	AG 57871
Steak Knife Solid Handle	240mm	AG 57891
Round Soup Spoon	170mm	AG 58901
Serving Spoon	250mm	AG 59101
Serving Fork	250mm	AG 59201



## **CONTOUR »50002« 3.0mm Mirror Polished Stainless Steel**

Table Spoon	206mm	AG 50102
Table Fork	206mm	AG 50202
Table Knife Hollow Handle	245mm	AG 50372
Table Knife Solid Handle	245mm	AG 50392
Dessert Spoon	185mm	AG 50402
Dessert Fork	185mm	AG 50502
Dessert Knife Hollow Handle	215mm	AG 50672
Dessert Knife Solid Handle	215mm	AG 50692
Tea Spoon	140mm	AG 50702
Demitasse Spoon	110mm	AG 50902
Oyster / Cake Fork	130mm	AG 56402
Bread & Butter Knife Hollow Handle	180mm	AG 56672
Bread & Butter Knife Solid Handle	180mm	AG 56692
Iced Tea Spoon	200mm	AG 57202
Round Soup Spoon	170mm	AG 58902





### FELINI »50003« 3.0mm Mirror Polished Stainless Steel

Table Spoon	200mm	AG 50103
Table Fork	200mm	AG 50203
Table Knife Solid Handle	225mm	AG 50393
Dessert Spoon	180mm	AG 50403
Dessert Fork	180mm	AG 50503
Dessert Knife Solid Handle	200mm	AG 50693
Tea Spoon	135mm	AG 50703
Demitasse Spoon	118mm	AG 50903
Bread & Butter Knife Solid Handle	160mm	AG 56693
Round Soup Spoon	170mm	AG 58903



### INFINITY »50004« 3.5mm Mirror Polished Stainless Steel

Table Fork	197mm	AG 50204
Table Knife Solid Handle	227mm	AG 50394
Dessert Spoon	190mm	AG 50404
Dessert Fork	190mm	AG 50504
Dessert Knife Solid Handle	190mm	AG 50694
Tea Spoon	147mm	AG 50704
Demitasse Spoon	114mm	AG 50904
Cake / Canape Fork	155mm	AG 56404
Bread & Butter Knife Solid Handle	180mm	AG 56694
Round Soup Spoon	197mm	AG 58904



## GLASSWARE.....

We can work together to produce unique individual logos and decorations for your glassware. From discreet "sandblast-style" logos to intricate multi-colour decorations, all can be produced at cost-effective rates. Special packaging can be arranged to enhance in-store promotions.



### SHERRY/PORT /LIQUEUR

H: 150mm  
V: 80ml  
AG 30101



### MARTINI/ COCKTAIL

H: 165mm  
V: 200ml  
AG 30102



### BRANDY BALLOON

H: 130mm  
V: 600ml  
AG 30103



### WHITE WINE

H: 175mm  
V: 250ml  
AG 30201



### RED WINE

H: 192mm  
V: 400ml  
AG 30202



### CHAMPAGNE FLUTE

H: 205mm  
V: 180ml  
AG 30203



### SHOT GLASS

H: 60mm  
V: 50ml  
AG 30304



### OLD FASHION TUMBLER

H: 100mm  
V: 310ml  
AG 30301



### HI BALL TUMBLER

H: 135mm  
V: 300ml  
AG 30302



### LONG DRINK COOLER

H: 180mm  
V: 450ml  
AG 30303

Produced by the largest manufacturer of hand made glassware in China, the **avantgarde** designer glasses are exclusive and unique. European styled & one-piece design, the **avantgarde** glasses are produced to ISO 9002 Quality Standards.

# avantgarde buffetware



The **avantgarde** Milk and Juice dispensers are certified safe by HACCP and are the centrepiece of the best buffet system available. Produced in 18/10 stainless steel and high impact plexiglass cylinders. All spare parts are available for easy replacement.

European quality at a value-for-money price.

**avantgarde** Cereal Dispensers are made from 18/10 stainless steel and durable plexiglass materials. These dispensers offer a new contemporary edge to the buffet and banqueting areas. **avantgarde** cereal dispensers are a perfect European designed solution for buffet & banqueting, catering facilities, staff canteens, restaurants, clubs and all function venues. Stylish & Practical - without blowing the budget!



**MILK DISPENSER**  
5 Ltr AG 93305

HACCP Australia Certified



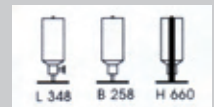
**JUICE DISPENSER**  
5 Ltr AG 96605

Inner Stainless Steel  
Ice Tube (Optional)  
AG 96633

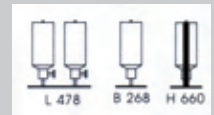
HACCP Australia Certified



**CEREAL DISPENSER - SINGLE**  
1 x 5 Ltr AG 43001



**CEREAL DISPENSER - DOUBLE**  
2 x 5 Ltr AG 43002



The **avantgarde** range of chafing dishes and accessories utilises the best features of several European Brands. The result is a stylish design incorporating hygienic aspects, controlled lid operation, insulated handles, heating elements that work, controlled condensation and produced in AISI 304 18 / 10 stainless steel to strict ISO 9001 quality standards.



**ROUND CHAFING DISH**  
38cm AG 41022

Full Roll Top Lid with controlled movement hinge mechanism stopping at half and full points. Supplied with 1 stainless steel food insert (AG 40003) and sterno burner holder with removable rack. Suitable for electric heating element AG 40380 (optional).



**RECTANGULAR CHAFING DISH**  
GN 1/1 AG 41011

Full Roll Top Lid with controlled movement hinge mechanism stopping at half and full points. Supplied with 1 stainless steel food insert (AG 49011) and sterno burner holders with removable rack. Suitable for electric heating element AG 40380 (optional).





Full Chrome Finish Available

## ROUND DELUXE CHAFING DISH

38cm AG 42200-C Chrome Finish  
AG 42200-G Gold Finish

Full Roll Top Lid with controlled movement hinge mechanism stopping at half and full points. Heavy duty brass legs & handle available in Chrome or Gold finish. Supplied with 1 stainless steel food insert (AG 40003) and sterno burner holder with removable rack. Suitable for electric heating element AG 40380 (optional).

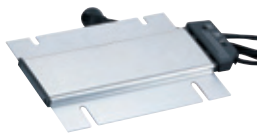


Full Chrome Finish Available

## RECTANGULAR DELUXE CHAFING DISH

GN 1/1 AG 41100-C Chrome Finish  
AG 41100-G Gold Finish

Full Roll Top Lid with controlled movement hinge mechanism stopping at half and full points. Heavy duty brass legs & handle available in Chrome or Gold finish. Supplied with 1 stainless steel food insert (AG 49011) and sterno burner holders with removable rack. Suitable for electric heating element AG 40380 (optional).



## ELECTRIC HEATING ELEMENT

220-240 V, 380 W  
AG 40380

Suitable for Round and Rectangular Chafing Dishes

## ROUND SOUP TUREEN

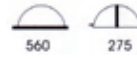
5 Ltr AG 40001

Suitable for Round Chafing Dish. Includes 1 Pot with Lid and adapter frame

## RECTANGULAR SOUP TUREEN

2 x 5 Ltr AG 40002

Suitable for Rectangular Chafing Dish. Includes 2 x Pots with Lids and adapter frame.

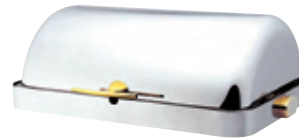


Full Chrome Finish Available

## ROUND COUNTER FITTED CHAFING DISH

38cm AG 44400-C Chrome Finish  
AG 44400-G Gold Finish

Full Roll Top Lid with controlled movement hinge mechanism stopping at half and full points. Handle available in Chrome or Gold finish. Supplied with 1 stainless steel food insert (AG 40003). Electric heating element AG 40380 to be purchased separately.



Full Chrome Finish Available

## RECTANGULAR COUNTER FITTED CHAFING DISH

GN 1/1 AG 45500-C Chrome Finish  
AG 45500-G Gold Finish

Full Roll Top Lid with controlled movement hinge mechanism stopping at half and full points. Handle available in Chrome or Gold finish. Supplied with 1 stainless steel food insert (AG 49011). Electric heating element AG 40380 to be purchased separately.



## ROUND PORCELAIN FOOD PAN

38cm - 6.5cm Deep  
AG 88301



## ROUND "S" DIVIDED PORCELAIN FOOD PAN

38cm - 6.5cm Deep  
AG 88302



## SPARE STAINLESS STEEL FOOD PAN FOR ROUND CHAFING DISH

38cm AG 40003



## SPARE STAINLESS STEEL FOOD INSERT

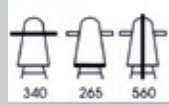
GN 1/1, 65mm Deep AG 49011  
GN 1/2, 65mm Deep AG 49012  
GN 1/3, 65mm Deep AG 49013  
GN 2/3, 65mm Deep AG 49023





## COFFEE / HOT WATER URN

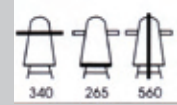
9 Ltr AG 46600



Full Chrome Finish Available

## COFFEE / HOT WATER URN DELUXE

9 Ltr AG 43300-C Chrome Finish  
AG 43300-G Gold Finish



## ELECTRIC HEATING ELEMENT FOR URN

220-240 V, 180 W AG 43301

Optional electric heating element suitable for use with Coffee / Hot Water Urns.

**avantgarde** induction chafing dishes deliver constant even temperature heating in an elegantly designed buffet system. The easy to install induction heater has 2 heat settings for versatility and an active heating option. The hinge mechanism guarantees slow and durable lid operation. Manufactured in high grade stainless steel, these chafing dishes are available in choice of glass window and covered lids. **avantgarde** induction buffetware is practical space saving European designed solution to suit any contemporary buffet service.



## ROUND INDUCTION CHAFING DISH

42cm AG 47700

Glass Window Lid  
Supplied with 1 stainless steel food insert (AG 47003).  
Optional porcelain food inserts available.



## GN 2/3 INDUCTION CHAFING DISH

GN 2/3 AG 48800

Glass Window Lid  
Supplied with 1 stainless steel food insert (AG 49023).  
Optional porcelain food inserts available.  
Suitable for GN 2/3 and GN 1/3 inserts.



## ROUND INDUCTION CHAFING DISH

42cm AG 47711

Stainless Steel Lid  
Supplied with 1 stainless steel food insert (AG 47003).  
Optional porcelain food inserts available.



## GN 2/3 INDUCTION CHAFING DISH

GN 2/3 AG 48811

Stainless Steel Lid  
Supplied with 1 stainless steel food insert (AG 49023).  
Optional porcelain food inserts available.  
Suitable for GN 2/3 and GN 1/3 inserts.



## INDUCTION HEATER

220-240 V, 450 W AG 40400

Counter fitted - easy install 2 Fixed Heat Settings and Active Heating option.

Safe to use - no open flame or red hot coils.

Efficient - no radiating heat and better energy concentration. Easy to clean Ceran plate.

Suitable for GN 2/3 and Round induction chafing dish.

**avantgarde** free standing electric chafing dishes are a latest design innovation in conventional chafing dishes. Equipped with hinge mechanism controlled lid movement and choice of glass window or covered lids, these modern units will enhance the presentation of any buffet service. European style and quality without the European price!



**ROUND ELECTRIC CHAFING DISH WITH GLASS LID**

Supplied with 1 stainless steel food insert (AG 47003).

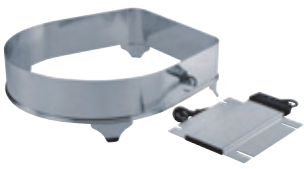
Chafing Dish 42cm      AG 47700-B  
 Round Frame            AG 47733  
 Electric Heating Element  
 220-240 V, 380 W      AG 40380



**ROUND ELECTRIC CHAFING DISH WITH STAINLESS STEEL LID**

Supplied with 1 stainless steel food insert (AG 47003).

Chafing Dish 42cm      AG 47711-B  
 Round Frame            AG 47733  
 Electric Heating Element  
 220-240 V, 380 W      AG 40380



**ROUND FRAME & ELECTRIC ELEMENT**

Round Frame            AG 47733  
 Electric Heating Element  
 220-240 V, 380 W      AG 40380



**ROUND PORCELAIN FOOD INSERT**

42cm      AG 47001



**ROUND "S" DIVIDED PORCELAIN FOOD INSERT**

42cm      AG 47002



**ROUND "STRAIGHT" DIVIDED PORCELAIN FOOD INSERT**

42cm      AG 47022



**GN 2/3 ELECTRIC CHAFING DISH WITH GLASS LID**

Supplied with 1 stainless steel food insert (AG 49023).

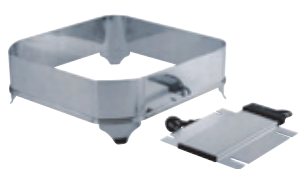
Chafing Dish GN 2/3      AG 48800-B  
 GN 2/3 Frame            AG 48833  
 Electric Heating Element  
 220-240 V, 380 W      AG 40380



**GN 2/3 ELECTRIC CHAFING DISH WITH STAINLESS STEEL LID**

Supplied with 1 stainless steel food insert (AG 49023).

Chafing Dish GN 2/3      AG 48811-B  
 GN 2/3 Frame            AG 48833  
 Electric Heating Element  
 220-240 V, 380 W      AG 40380



**GN 2/3 FRAME & ELECTRIC ELEMENT**

GN 2/3 Frame            AG 48833  
 Electric Heating Element  
 220-240 V, 380 W      AG 40380



**GN 2/3 PORCELAIN FOOD INSERT**

GN 2/3                      AG 48023



**SPARE ROUND STAINLESS STEEL FOOD INSERT**

42cm                      AG 47003

# avantgarde holloware



**avantgarde** Vacuum insulated servers are dishwasher safe with unbreakable stainless steel liners for commercial hospitality industry.

Designed with form and function, avantgarde vacuum jugs offer safe pouring, no burn exterior, single hand operation and highest insulating performance. Stylish and practical, these products are ideal for banqueting, conventions, catering, room service, hospitals, airlines, clubs, pubs, offices, schools and home! Compare the style, quality and price of these stylish and durable products.



**VACUUM JUG  
MIRROR POLISHED  
STAINLESS STEEL**

1.0 Ltr AG 70010  
1.5 Ltr AG 70015  
2.0 Ltr AG 70020



**SPARE COMPLETE LID  
FOR VACUUM JUG**

BLACK TAB AG 70001  
RED TAB AG 70201



**VACUUM AIR POT  
SATIN FINISH  
STAINLESS STEEL**

2.3 Ltr AG 71023

**avantgarde** holloware is manufactured by a world-leading factory with alliances to major European and USA brands. All items are produced exclusively for avantgarde in AISI 304-18/10 grade stainless steel under strict ISO9001 Quality controls.



**TWO TIER STAND**

AG 63302  
HEIGHT 35cm  
TRAYS 33cm x 27cm



**THREE TIER STAND**

AG 63303  
HEIGHT 55cm  
TRAYS  
41cm x 33cm & 27cm



**HIGH TEA STAND**

AG 61303  
INTERNAL RING: 18cm  
(28cm maximum plate size)



**OVAL TRAY**

AG 65632 32cm x 24cm



**CAKE STAND**

AG 61800 31cm



**BREAD BASKET**

AG 67120 20cm



**WATER PITCHER WITH  
ICE CATCHER**

AG 60715 1.5 Ltr



**PREMIUM WATER JUG  
WITH ICE CATCHER**

AG 64320 2.0 Ltr



**WINE BUCKET**

21cm AG 66011



**ICE BUCKET**

14cm AG 65011



**ICE BUCKET**

Double walled insulated with lid  
12cm / 1.0 Ltr AG 68014



**CHAMPAGNE/WINE COOLER**

Double walled insulated  
20cm AG 69020



**PUNCH BOWL**

AG 60532 40cm / 20ltrs



**WINE BUCKET STAND**

AG 66000



**SALAD TONGS**

20cm AG 67504



**ICE TONGS**

18cm AG 67501



**PASTRY TONGS**

19cm AG 67502



**SPAGHETTI TONGS**

20cm AG 67503



# avantgarde contract furniture



European styling and quality at affordable prices! The **avantgarde** range of chairs, tables, dance floors, crowd control, skirting, trolleys and accessories suit all installations. We offer a very stylish range of outdoor/indoor furniture for use on terraces, lounge areas, poolside and patios. Strong aluminium frames, stackability, high density foam and fire retardant fabrics, available in a huge range of colours and patterns, make avantgarde contract furniture range very versatile.

**avantgarde** furniture offers assurance of hand checked quality and guarantee of materials and workmanship.

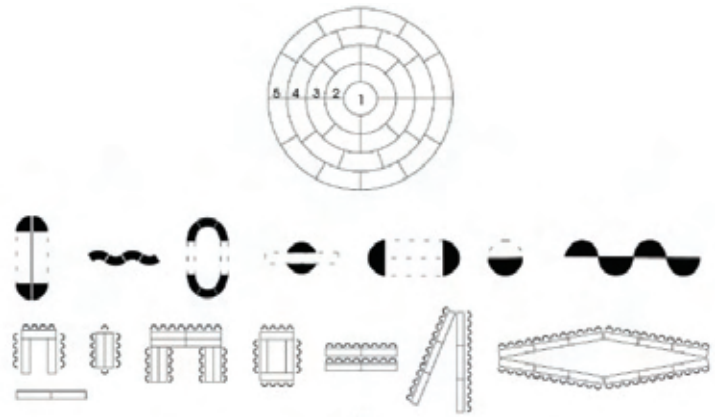
All foam and fabric comply with standard BS7176:1995. Fabrics have abrasion rating in excess of 50000 Cycles (800g/12Kpa) Martindale. Fabric flammability is in compliance to standards BS 5852 and California TB 117 Section E.

- Hotels • Banqueting
- Restaurants and Cafes
- Coffee Shops • Convention Centres
- Function Centres • Pubs
- Clubs • Aged Care
- Canteens • Patio • Apartments

## BANQUETING CHAIRS

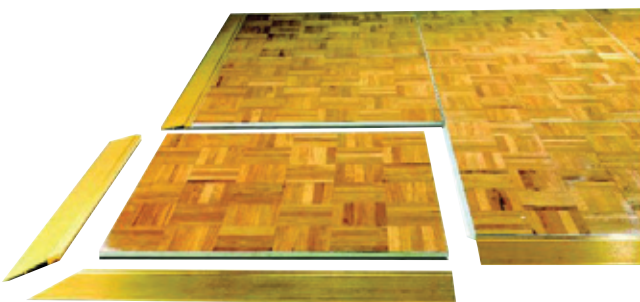


## BANQUETING FOLDING TABLES



## DANCE FLOOR & MOBILE STAGE

Portable Dance Floor Panels & Aluminium Trims



Mobile Stages



Huge selection available. Please contact us for a complete contract furniture brochure.

## RESTAURANT & CAFE



**Huge selection available. Please contact us for a complete contract furniture brochure.**





**OUTDOOR & PATIO**



**TROLLEYS & CROWD CONTROL**



**Huge selection available. Please contact us for a complete contract furniture brochure.**

EUROPEAN STYLE WITHOUT  
THE EUROPEAN PRICE

avantgarde

# avantgarde



- Chinaware • Glassware • Cutlery
- Buffetware • Holloware • Furniture

## Australia

Foodservice Equipment International Pty Ltd

T 1800 673 153

E [sales@tableware.com.au](mailto:sales@tableware.com.au)

W [www.tableware.com.au](http://www.tableware.com.au)

## Worldwide

T 61 7 5591 5788

F 61 7 5591 5266

E [sales@tableware.com.au](mailto:sales@tableware.com.au)

W [www.tableware.com.au](http://www.tableware.com.au)

## NSW

37/42-46 Wattle Road

Brookvale NSW 2100

T 61 2 9938 5000

F 61 2 9938 5055

## QLD

22 Harvest Court

Southport QLD 4215

T 61 7 5591 5788

F 61 7 5591 5266